



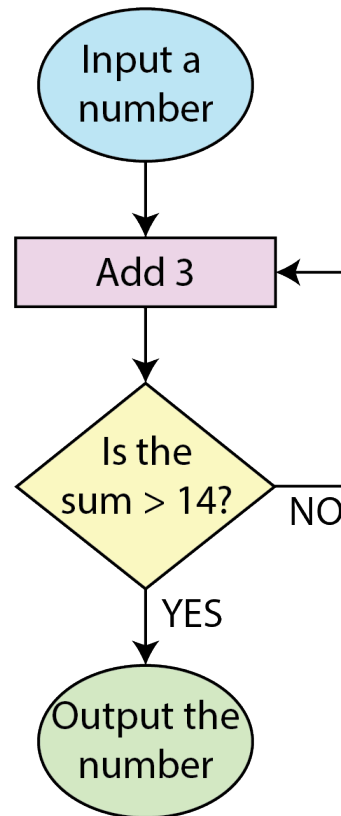
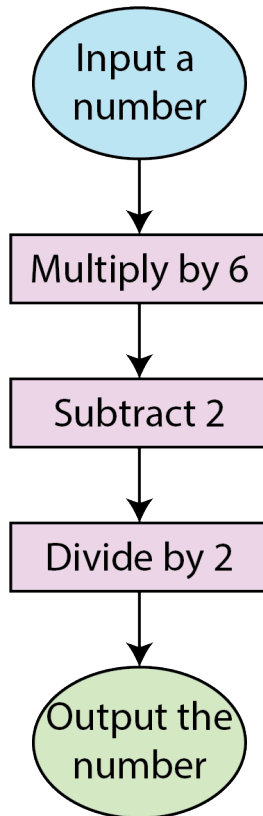
Problem of the Week

Problem B and Solution

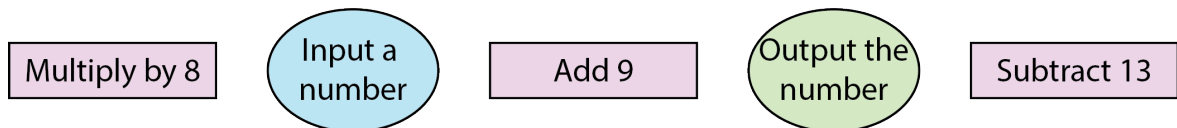
Nice Flow

Problem

- (a) For each flowchart below, determine the output value when the number 13 is the input number and when the number 10 is the input number.



- (b) Using the symbols below, create all possible flowcharts.



- (c) Which of the flowcharts in part (b) give an output of 248 for an input of 35?



Solution

(a) For the flowchart on the left:

When we input 13, we first multiply by 6 to get 78.
Then, we subtract 2 to get 76.
Finally, we divide 76 by 2 to get 38.
Thus, the output is 38.

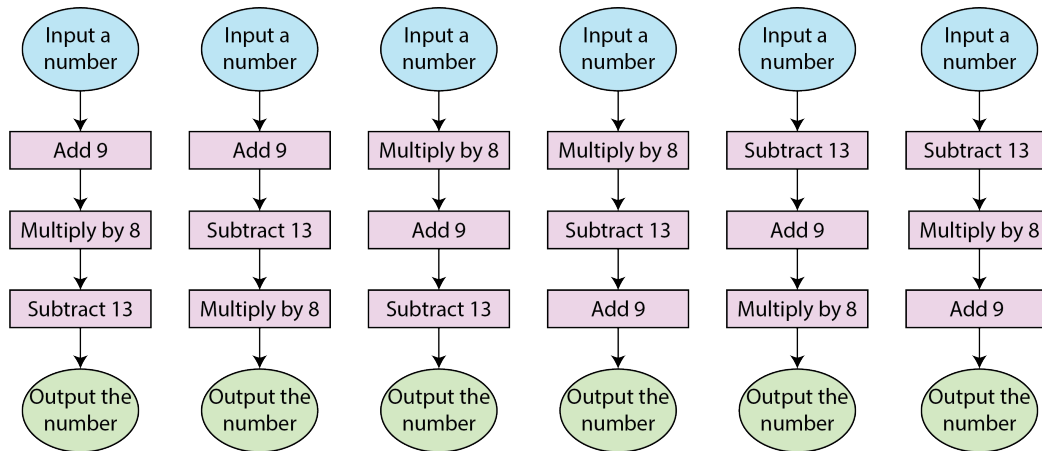
When we input 10, we first multiply by 6 to get 60.
Then, we subtract 2 to get 58.
Finally, we divide 58 by 2 to get 29.
Thus, the output is 29.

For the flowchart on the right:

When we input 13, we first add 3 to get 16.
Since $16 > 14$, the output is 16.

When we input 10, we first add 3 to get 13.
Since 13 is not greater than 14, we add 3 again to get 16.
Since $16 > 14$, the output is 16.

(b) Here are the six possible flowcharts:



(c) Here are the two flowcharts that work:

