

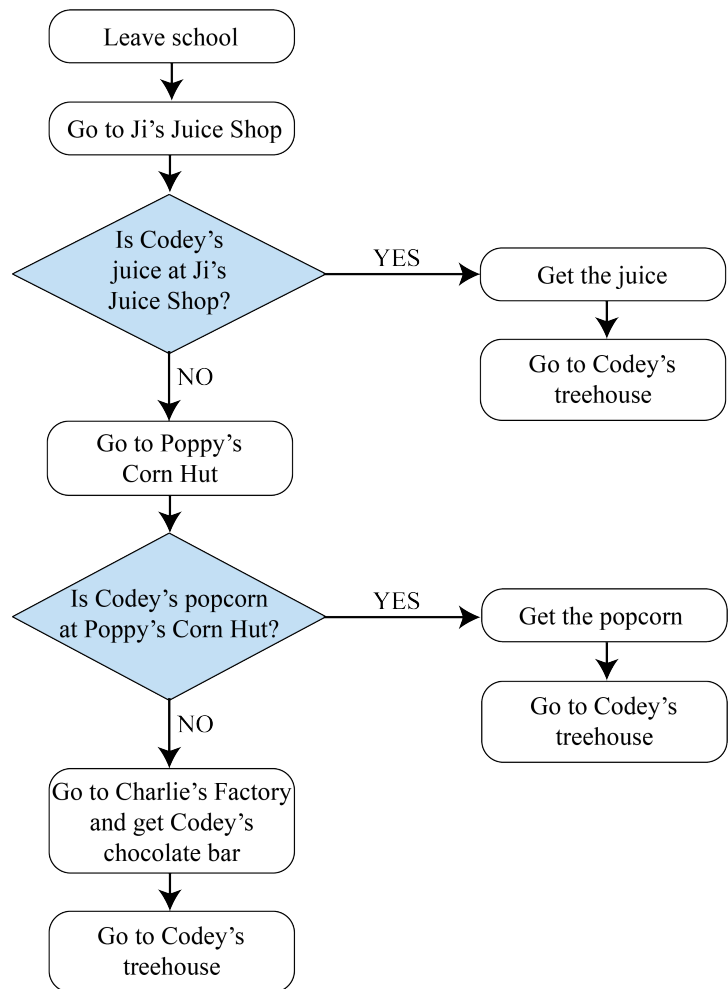


## Problem of the Week

### Problem B

#### Go With the Flow

Codey has asked three friends to pick up some food on their way from school to his treehouse. At three different stores he has paid for and set aside one item, and he has given his friends instructions to pick these items up using the following flow chart.



- (a) Raj leaves school first, then Bharti, then Kylie. If they each take the same route and walk at the same speed, which item will each friend bring to Codey's treehouse?
- (b) How could you modify the flow chart so that each friend has to go to only one store?